



# So You Know!



Sunday, July 21, 2013  
Community Covenant Church  
400 Pleasant Street, East Bridgewater, MA 02333  
(508) 583-3360 [www.communitycovenant.com](http://www.communitycovenant.com)

## THIS WEEK

Today	Worship Celebration	10:00 am
	Fellowship Time	11:10 am
Monday	Leadership Team Meeting	7:00 pm
Thursday	Stephen Ministers	7:00 pm
Next Sunday	Worship Celebration	10:00 am
	Fellowship Time	11:10 am

## NEWSLETTER DEADLINE TOMORROW

The deadline for the August 2013 issue of the CORNERSTONE is tomorrow, **July 22<sup>nd</sup>**. If you would like to submit an article, please bring a hard copy to the church office, or email a digital version, without formatting, to [office@communitycovenant.com](mailto:office@communitycovenant.com).  
*Thank you.*



## COVENANT WOMEN MINISTRIES LADIES' MOVIE NIGHT



This Wednesday, July 24<sup>th</sup>, Covenant Women Ministries will host Ladies Night at the Movies. Come join us for film, fun, and fellowship! We will meet in the narthex at 7pm to enjoy a movie and discussion. For more information, please see Beth Stewart.

**COMMUNITY MEAL**  
**July 24<sup>th</sup> 5:00 pm**  
**at East Bridgewater UMC**  
No charge, donations accepted  
Open to everyone!

## VACATION BIBLE SCHOOL SUPPLIES NEEDED

Many supplies are needed for Vacation Bible School "SonSurf Beach Bash" theme - can you help by donating any items? A sign-up board is located in the narthex. Any assistance is much appreciated.

## VOLUNTEERS STILL NEEDED

VBS will run from July 29 through August 2. If you would like to volunteer, please see Betti Buzzee or Gabrielle Olson TODAY.

Also, please keep VBS in your prayers!

## PHOTOS FOR WEBSITE

We are working toward making our church's new website live by the beginning of August. In an effort to make it authentically our church, Mark and Becky Phelan will be taking photos in the coming days for the web. If you would prefer not to have your photo on the internet, please speak up! Call or email the church office, or just tell the person wielding the camera. Thank you!



## WORSHIP CELEBRATION

NEXT SUNDAY, July 28<sup>th</sup> 10:00 am

- **Pastor Don Olson, preaching**  
"Teach Us To Pray"  
Text: Luke 11:1-13

### Childcare During Worship

Next Sunday, July 28<sup>h</sup> Crystal Coffey will provide care in the Nursery; Mabel Sawyer will be in the Toddler Room.

### Children's Church

Children's Church is for children (Kindergarten - 3rd grades) during the second half of our Sunday morning worship celebration. The leader on July 28<sup>th</sup> will be Candi Kieth.

### BCMI@CCC HOUSE PARTY DATE CLARIFICATION!



Oops! We invited you to our home to learn about Brockton Christian Mentoring Initiative on a date that doesn't exist. Please come join us on **WEDNESDAY, AUGUST 14.**

For more information, please pick up an information sheet in the narthex, or see Katie Sandford.

### SUMMER SUNDAY SOCIALS

Pack a picnic lunch, grab your towel and lawn chair, and join us following services for a relaxing afternoon of fellowship. Grills will be available if you wish to cook. Bring a dish to share if you can. All are welcome.

- July 28<sup>th</sup> – Ted and Janet Ek  
930 Union St  
Rockland, MA
- August 11<sup>th</sup> – Curt and Mabel Sawyer  
459 Cedar St  
East Bridgewater, MA
- August 25<sup>th</sup> – Lee and Beth Stewart  
West Island

Directions will be available the day of each Sunday Social.

Any questions? See Sandy Brown or Janet Ek.

## CARD SHOWER

Please send a card to our friend:

Ruth Killman  
3937 Stillwater Drive  
Rocklin, CA 95677



**REGISTER FOR VBS**  
Registration forms are  
on the table in the narthex.

### HELP FOR FELLOWSHIP TIME

If you would be willing to prepare coffee/tea after worship for one or more Sundays, please sign up on the sheet in the narthex. Please see Brian McCarthy or Janet Ek with any questions. On the day you sign up to be responsible for Fellowship Time, please let Brian know when you arrive! *Thanks....*



### FOR IMMEDIATE PRAYER NEEDS

To make a request, please call the church office at 508-583-3360 or e-mail to [office@communitycovenant.com](mailto:office@communitycovenant.com); or call Candi Keith at 508-583-1227 or e-mail to [cskeith@comcast.net](mailto:cskeith@comcast.net). Requests are forwarded to prayer chain participants.

### REMEMBER IN PRAYER

- Dave Buzzee – in Afghanistan; working for Raytheon
- Ernie Johansen – at Life Care Center, W. Bridgewater - rehabbing from knee replacement on July 15
- Janet Cheney – home - rehabbing from knee replacement surgery on July 15
- Liam MacDonald – home recovering from surgery on July 12
- Evelyn Fleming and family – grieving the loss of Alan Fleming who died on July 16 and the *Witness to the Resurrection* was on July 19
- Pastor Olson and family – grieving the death of his brother-in-law who died on July 17 and the *Witness to the Resurrection* will be on Monday, July 22
- Jeanne Henry (Becky Phelan's mother) - at home under hospice care with cancer
- Patrick Heathcote (Nikki DeLano's brother) and family - dealing with a tragic accident
- Donna Halleran - at home recovering from viral meningitis
- Priscilla Borden - recovering from Lyme disease
- Blair (Ruth Pinho's cousin's son) - home recovering from surgery with IV antibiotics
- Administrative Assistant - Becky Phelan
- Stewardship Campaign Committee - Beth Stewart, Betti Buzzee, David Sawyer, Lindsay Buzzee, Mark Phelan, Scott Ambroceo, and Pastor Olson
- Theresa Guaraldi - undergoing tests to diagnose ongoing physical ailments
- Joe Cheney (Dana Cheney's brother) - home recovering from successful surgery to remove cancerous lung nodule on May 28
- Ministry at Community Covenant Church - Didier - our church's sponsored child through Covenant KIDS Congo
- Our world-wide mission – Pastor Was & Jean Mute, Koyuk, Alaska
- Our Ministry in the East Coast Conference – Sudanese Covenant Church, Manchester, NH, Monyroor Teng, Pastor
- U.S. military personnel & their families
- Seth Gillis – US Marine Corps, North Carolina
- Spc. James Gignac (Nicole Aguirre's brother) - U.S. Army, Afghanistan
- Madelyn Newberg - home with health concerns
- Myrtle Tighe - The Arbors Assisted Living, Stoughton
- Marge Shurtleff - Emmanuel House, Brockton
- Marion Schill – Hannah B. Shaw Home, Middleboro
- Pat Gillis—Hannah B. Shaw Home, Middleboro

### SAVE THE DATE



#### NEW ENGLAND SEAFARERS MISSION VOLUNTEER DAY

August 24<sup>th</sup> 8 am - 4 pm

Black Falcon Terminal

Boston, MA

SIGN-UP SHEET IN NARTHEX  
DETAILS IN JULY CORNERSTONE

**PILGRIM PINES  
SUMMER CAMP UPDATE**

**Scholarships are Available!!!** Pilgrim Pines has been blessed with the generosity of donors supporting our scholarship fund. We recognize that a week at camp can be a sizeable obstacle for families, especially when there are multiple children or you are looking at family camp. Our scholarship fund helps remove this barrier.

We have more money available this year to assist campers. Do not let finances prevent you from registering a child for Camp Squanto or your family for Mayflower Family Ministry. Limited space is available. Contact the office to register and for information on scholarships.

Also, be sure to get these fall retreats on your calendar:

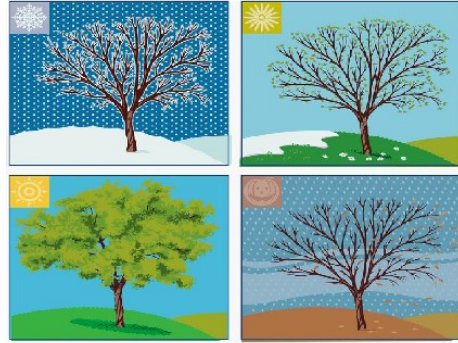
- Father-Child Retreat  
August 23-25
- Women's Retreat  
September 20-22
- Men's Retreat  
October 11-13
- Fall Foliage  
October 14-17
- Mother-Daughter Retreat  
November 22-24
- Thanksgiving Family Camp  
November 27-29

See our website [www.pilgrimpines.org](http://www.pilgrimpines.org) for additional information, or call us at (603)352-0443.

**WHALE WATCH TICKETS TO SUPPORT SCIENCE WITH A MISSION!**

- **What:** Whale watch aboard the Hurricane II out of Rose's Wharf in Gloucester. For more details, directions, what to bring, etc., visit [www.seethewhales.com](http://www.seethewhales.com).
- **When:** Flexible! You can use your voucher for any sailing April through October, except for the 1:30 pm sailings on weekends, July-Labor Day. Vouchers do not expire!
- **Why:** To support Science with a Mission, bringing diagnostic testing to developing countries! \$18 of each ticket goes directly to SMI!
- **How much:** \$30 per ticket. (Regular prices range from \$33 to \$48!)
- **Now what:** See a member of the SMI board - Katie Sandford, Donna Halleran, or Ruth Carrigan.

**BEAUTY**



**IN ALL SEASONS**

\*\*\*\*\*

WOMEN MINISTRIES EAST COAST CONFERENCE

**FALL RETREAT**

**September 20 – 22, 2013**

**at Pilgrim Pines, Swanzey, NH**

check it out at [www.eccwomen.org](http://www.eccwomen.org) or your church office

**REGISTRATION FORMS**

For further information, please contact Candi Keith. Registration forms are available from the table in the Narthex.