



So You Know!



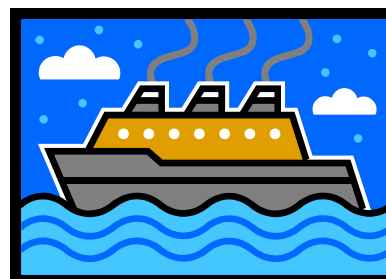
Sunday, August 18, 2013
Community Covenant Church
400 Pleasant Street, East Bridgewater, MA 02333
(508) 583-3360 www.communitycovenant.com

THIS WEEK

Today		
	Worship Celebration	10:00 am
	Fellowship Time	11:10 am
Thursday		
	Stephen Ministers	7:00 pm
Saturday		
	NE Seafarers Mission Trip	8:00 am
Next Sunday		
	Worship Celebration	10:00 am
	Fellowship Time	11:10 am

N.E. SEAFARERS MISSION VOLUNTEER DAY

Saturday, August 24th 8 a.m. to 4 p.m.
Black Falcon Terminal, Boston Harbor



We are in need of 6-8 volunteers to assist our mission with the seafarers who come to the port of Boston. Through the work of New England Seafarers Mission (NESM), people from 150 countries are met, greeted and loved in Jesus' name. They are helped to contact family, send paychecks home, and get supplies.

BLOOD PRESSURE SCREENING TODAY



All those interested are invited to the library following worship today for a blood pressure check, a service to help us care for our health.

WITNESS TO THE RESURRECTION

The *Witness to the Resurrection* for Gladys Johnson will be held on Tuesday, August 20th at 11:00am here at Community Covenant Church. A collation will follow services in the multipurpose room.

CORNERSTONE DEADLINE TOMORROW

The deadline to submit articles for September's Cornerstone is tomorrow, August 19th. You may bring items to the church office or email them, unformatted, to office@communitycovenant.com.

SCHOOL SUPPLIES DUE TODAY

School supply donations for East Bridgewater Central School are due today. If you would like to donate but have not done so, please call Becky in the church office on Monday.



Steve Cushing, our NESM chaplain, has an amazing ministry, visiting ships, advocating for seafarers, developing relationships with his "congregation," and bringing the gospel message in Word and deed. When the big ships come in, he needs our help.

On Saturday, August 24th, we will be serving the crew of Holland America Cruise Lines' *Veendam* (cruises to Quebec City, Canada). We will carpool from church at 8 am and return to church by 4:30 p.m. Anyone from 9th grade through adult is welcome to come and serve on this one-day mission trip. For more information, speak to Pastor Olson. A sign-up sheet is on the bulletin board in the Narthex. Plan now to spend Saturday, August 24th by the sea in Boston serving Christ.

WORSHIP CELEBRATION

NEXT SUNDAY, August 25th 10:00 am

- **Pastor Don Olson, preaching**
"God's Call"
Text: Jeremiah 1:4-10
- **Mission Moment: Small Groups Ministry**

Childcare During Worship

Next Sunday, August 25th Beth Miltner and Jen Ambroceo will provide care in the Nursery; Susan Bolinder will be in the Toddler Room.

Children's Church

Children's Church is for children (Kindergarten - 3rd grades) during the second half of our Sunday morning worship celebration. The leader on August 25th will be Kristen Lanagan.

CARD SHOWER

Please send a card to our friend:

Myrtle Tighe
The Arbors Apt. 319
2121 Central Ave
Stoughton, MA 02072

THANK YOU

Dear Friends,
You have comforted and strengthened me with your words of encouragement, cards, and phone calls. God has been my source of strength and He is ever faithful. Thanks also to choir friends for the pothos plant.

With love and a grateful heart,
Janet Cheney

Psalm 18:33—He makes my feet like the feet of a deer. He enables me to walk and make progress upon my high places of trouble, suffering, or responsibility.

HONDURAS LETTERS

Thank you to everyone who wrote to the children in Honduras. I have return letters to distribute to those who did. Please see me after church to get your letters!



Mabel Sawyer

SUMMER SUNDAY SOCIAL

Pack a picnic lunch, grab your towel and lawn chair, and join us following services for a relaxing afternoon of fellowship. Grills will be available if you wish to cook. Bring a dish to share if you can. All are welcome.

August 25th – Lee and Beth Stewart
West Island

Directions will be available the day of the Sunday Social.

Any questions? See Sandy Brown or Janet Ek.

OUR DAILY BREAD

Copies of *Our Daily Bread* for September-October-November 2013 are available in the narthex.

HELP FOR FELLOWSHIP TIME

If you would be willing to prepare coffee/tea after worship for one or more Sundays, please sign up on the sheet in the narthex. Please see Brian McCarthy or Janet Ek with any questions. On the day you sign up to be responsible for Fellowship Time, please let Brian know when you arrive! *Thanks....*





FOR IMMEDIATE PRAYER NEEDS

To make a request, please call the church office at 508-583-3360 or e-mail to office@communitycovenant.com; or call Candi Keith at 508-583-1227 or e-mail to cskeith@comcast.net. Requests are forwarded to prayer chain participants.

REMEMBER IN PRAYER

- Debbie Goucher and family, grieving the loss of her mother Gladys Johnson, who died on Tuesday, August 13th. The *Witness to the Resurrection* will be on Tuesday, August 20th.
- Curt Sawyer – under treatment for Lyme Disease and babesiosis
- The ladies attending Triennial XIV August 15-18
- The 30 children that attended our Vacation Bible School
- Ernie Johansen – at home - rehabbing from knee replacement on July 15
- Janet Cheney – home - rehabbing from knee replacement surgery on July 15
- Jeanne Henry (Becky Phelan's mother) - at home under hospice care with cancer
- Patrick Heathcote (Nikki DeLano's brother) and family - dealing with a tragic accident
- Stewardship Campaign Committee - Beth Stewart, Betti Buzzee, David Sawyer, Lindsay Buzzee, Mark Phelan, Scott Ambroceo, and Pastor Olson
- Dave Buzzee – in Afghanistan; working for Raytheon
- Theresa Guaraldi - undergoing tests to diagnose ongoing physical ailments
- Joe Cheney (Dana Cheney's brother) - home recovering from successful surgery to remove cancerous lung nodule on May 28
- Ministry at Community Covenant Church – Leadership Team
- Our world-wide mission – Alynne MacLean , Science with a Mission
- Our Ministry in the East Coast Conference – Rev. Howard Burgoyne, East Coast Conference Superintendent
- U.S. military personnel & their families
- Seth Gillis – US Marine Corps, North Carolina
- Spc. James Gignac (Nicole Aguirre's brother) - U.S. Army, Afghanistan
- Madelyn Newberg - home with health concerns
- Myrtle Tighe - The Arbors Assisted Living, Stoughton
- Marge Shurtleff - Emmanuel House, Brockton
- Marion Schill – Hannah B. Shaw Home, Middleboro
- Pat Gillis—Hannah B. Shaw Home, Middleboro



HORIZONS FOR HOMELESS CHILDREN

Like Kids? Come Play With Us!!!

Horizons for Homeless Children is looking for volunteers to play with young children living in homeless shelters in Massachusetts. The commitment is just two hours a week, but it will make a real difference in these children's lives. And in yours. The next training will be held Saturday, September 14, 2013 from 9am to 3pm in West Bridgewater. Other dates are available. To apply or to find out more, call 508-510-3250 or visit horizonschildren.org/playspaces.

ONLINE GIVING

Just in case you didn't already know!

Often our summer plans take us away from our home church as we travel to visit family, go on vacations, etc., but of course church expenses never take a vacation. Your faithful giving throughout the summer is required if we are to continue to meet our financial obligations.

As a convenience to those who may find it easier, electronic giving is still an option. Simply visit the church website at www.communitycovenant.com and click on "Tithe & Offerings". There, you can schedule a one-time gift or a recurring amount to be transferred directly from your bank account to the church bank account on a weekly or monthly basis.

Questions regarding any church financial issues may be directed to Lee Stewart, Financial Officer.

Whale Watch tickets to support Science with a Mission!

- What: Whale watch aboard the Hurricane II out of Rose's Wharf in Gloucester. For more details, directions, what to bring, etc, visit www.seethewhales.com.
- When: Flexible! You can use your voucher for any sailing April through October, except for the 1:30 pm sailings on weekends, July-Labor Day. Vouchers do not expire!
- Why: Support Science with a Mission, bringing diagnostic testing to developing countries!
\$18 of each ticket goes directly to SMI!
- How much: \$30 per ticket. (Regular prices range from \$33 to \$48!)
- Now what: See a member of the SMI board - Katie Sandford, Donna Halleran, or Ruth Carrigan.



PILGRIM PINES

SUMMER CAMP UPDATE

Scholarships are Available!!! Pilgrim Pines has been blessed with the generosity of donors supporting our scholarship fund. We recognize that a week at camp can be a sizeable obstacle for families, especially when there are multiple children or you are looking at family camp. Our scholarship fund helps remove this barrier.

We have more money available this year to assist campers. Do not let finances prevent you from registering a child for Camp Squanto or your family for Mayflower Family Ministry. Limited space is available. Contact the office to register and for information on scholarships.

Also, be sure to get these fall retreats on your calendar:

- Father-Child Retreat
August 23-25
- Women's Retreat
September 20-22
- Men's Retreat
October 11-13
- Fall Foliage
October 14-17
- Mother-Daughter Retreat
November 22-24
- Thanksgiving Family Camp
November 27-29

See our website www.pilgrimpin.es.org for additional information, or call us at (603) 352-0443.